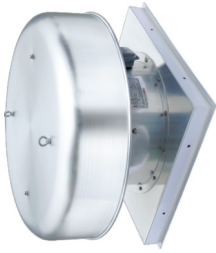


Roof Axial Fan 屋顶轴流风机



The blade of the roof axial fan is aluminum alloy die casting. It is with aerofoli blade, which is rigid, light and adjustable within 25° to 50° of angles. There are a variety options available.

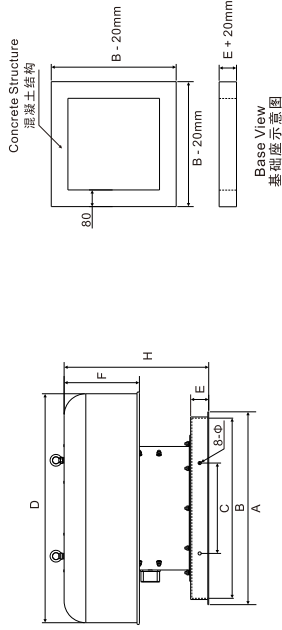
- There are 2 options available in terms of material (enclosure) of the ventilator:
1. For model made of aluminum, it is generally intended for buildings that can not support heavy objects. (Optional models begin from GXF2.8 up to GXF7.1)
 2. For models made of steel, it is generally intended for buildings that can support heavy objects. (Optional models begin from GXF2.8 up to GXF12.5)

绿岛风公司所生产的屋顶轴流风机，风叶部份为铝合金压铸成形，其叶片为机翼型产品，具有强度高，叶片重量轻，叶片角度可调节，调节角度为25°至50°的组合式风叶，性能范围广，可选择性优越。

此产品为分两种材料制作

1. 满足钢结构建筑屋顶承压力小的为全铝制产品，型号范围：GXF2.8 - GXF7.1之间。
2. 负重较大的建筑，可采用全钢制产品型号范围：GXF2.8 - GXF12.5之间。

External Dimensions (Aluminum & Steel Casing) 外形尺寸图(钢制和铝制)



Dimension Table 尺寸表

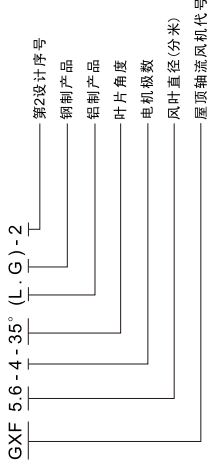
型号 Model No.	A	B	C	D	E	F	H	8-φ
2.8	520	460	240	580	60	220	435	10.5
3.15	560	520	260	580	60	220	435	10.5
3.55	590	550	275	580	60	220	455	10.5
4.0	640	600	300	760	60	250	485	10.5
4.5	690	650	325	760	60	250	535	10.5
5.0	740	700	350	900	60	250	535	10.5
5.6	800	760	380	900	60	250	535	12.5
6.3	870	830	415	1110	60	250	585	14.5
7.1	950	910	455	1110	60	250	585	14.5
8.0	1050	1000	500	1250	60	250	685	14.5
9.0	1150	1100	550	1550	60	250	790	16.5
10.0	1250	1200	600	1750	60	350	960	16.5
11.2	1400	1350	680	1960	60	350	930	16.5
12.5	1550	1500	800	2150	60	350	1000	16.5

Remarks: Models with steel casing, GXF2.8 to GXF12.5, which totals 14 specifications. Models with aluminum casing, GXF2.8 to GXF7.1, which totals 9 specifications.

说明：钢制产品型号，GXF2.8 - 12.5共14种规格。全铝制产品型号：GXF2.8 - 7.1共9种规格。

Roof Axial Fan 屋顶轴流风机

Model Explanation 型号说明



Electrical Ratings 技术参数

型号 Model No.	转速 Rotating Speed (R.P.M.)	设计序号 Design Serial No.	风量 Air Flow (m³/h)	全压 Static Pressure (Pa)	噪音 Noise (dB)	功率 Power (kw)	净重 Net Weight (kg)
2.8-4B	1450	1	767	65	54	0.06	44
	1450	2	1100	62.9	52	0.06	44
	1450	3	1370	37	51	0.06	44
2.8-4A	1450	1	1060	76.3	56	0.06	46
	1450	2	1390	61	55	0.06	46
	1450	3	1550	46.6	53	0.06	46
3.15-4B	1450	1	1040	70.1	56	0.06	46
	1450	2	1560	57.5	55	0.06	46
	1450	3	1960	40.1	55	0.06	46
3.15-4A	1450	1	1500	86.2	59	0.06	46
	1450	2	1930	71.7	57	0.06	46
	1450	3	2220	50.1	56	0.06	46
3.55-4B	1450	1	1310	78.5	59	0.06	47
	1450	2	2120	62.7	57	0.06	47
	1450	3	2570	47.2	57	0.06	47
3.55-4A	1450	1	1800	103	62	0.12	44
	1450	2	2510	84.8	60	0.12	44
	1450	3	3030	54.1	58	0.12	44
4.0-4B	1450	1	1960	73.9	59	0.12	44
	1450	2	2820	63.5	58	0.12	44
	1450	3	3330	47.4	58	0.12	44
4.0-4A	1450	1	2320	127	65	0.18	44
	1450	2	3440	101	63	0.18	44
	1450	3	4000	72.9	61	0.18	44
4.5-4-25	1450	1	2790	128	65	0.25	44
	1450	2	3730	101	63	0.25	44
	1450	3	4100	81.4	62	0.25	44
4.5-4-30	1450	1	3200	145	67	0.37	63
	1450	2	4630	115	66	0.37	63
	1450	3	4990	96.9	65	0.37	63
4.5-4-35	1450	1	3750	158	68	0.37	63
	1450	2	4750	146	68	0.37	63
	1450	3	5680	111	68	0.37	63
4.5-4-40	1450	1	4340	170	69	0.55	66
	1450	2	5870	150	69	0.55	66
	1450	3	6560	118	68	0.55	66

Remark: 1. The technical data is tested at 380V~ / 50Hz / 3Ph. 2. Customized rated voltage and frequency are available.

备注：1. 以上所有参数均由380V~ / 50Hz / 3Ph进行测试。2. 可根据客户的额定电压和频率来设计做合适的产品。

型号 Model No.	转速 Rotating Speed (R.P.M.)	设计序号 Design Serial No.	风量 Air Flow (m³/h)	全压 Static Pressure (Pa)	噪音 Noise (dB)	功率 Power (kw)	净重 Net Weight (kg)
4.5-4-45	1450	1	5390	174	70	0.55	66
	1450	2	6120	160	69	0.55	66
	1450	3	6920	136	68	0.55	66
5.0-4-25	1450	1	3320	154	68	0.37	44
	1450	2	5050	122	66	0.37	44
	1450	3	5780	90.2	65	0.37	44
5.0-4-30	1450	1	4350	170	70	0.55	46
	1450	2	5710	156	70	0.55	46
	1450	3	6940	107	69	0.55	46
5.0-4-35	1450	1	5120	186	71	0.55	46
	1450	2	6850	165	70	0.55	46
	1450	3	7950	128	69	0.55	46
5.0-4-40	1450	1	5930	198	72	0.75	46
	1450	2	7630	182	71	0.75	46
	1450	3	9110	141	70	0.75	46
5.0-4-45	1450	1	6910	210	72	1.1	47
	1450	2	8770	184	72	1.1	47
	1450	3	9210	170	72	1.1	47
5.0-6-30	960	1	2820	72.9	60	0.18	44
	960	2	3700	64.7	60	0.18	44
	960	3	4440	49.1	59	0.18	44
5.0-6-35	960	1	3500	80.2	62	0.18	44
	960	2	4230	74.8	61	0.18	44
	960	3	5020	59.2	60	0.18	44
5.0-6-40	960	1	3880	85	63	0.25	44
	960	2	4940	80	62	0.25	44
	960	3	5510	63	62	0.25	44
5.0-6-45	960	1	4500	90	64	0.25	44
	960	2	5530	81	63	0.25	44
	960	3	5970	74	63	0.25	44
5.6-4-25	1450	1	4620	195	71	0.55	63
	1450	2	6100	167	70	0.55	63
	1450	3	7770	106	68	0.55	63
5.6-4-30	1450	1	5230	218	73	0.75	63
	1450	2	7370	188	72	0.75	63
	1450	3	8770	146	71	0.75	63

Roof Axial Fan 屋顶轴流风机

Electrical Ratings 技术参数

型号 Model No.	转速 RPM (R.P.M.)	设计序号 Design Serial No.	风量 Volume (m ³ /h)	风压 Volume Pressure (Pa)	功率 Noise Power (W)	净重 Net Weight (kg)
5.6-4-35	1450	1	7350	231	74	66
5.6-4-35	1450	2	9730	201	73	1.1
5.6-4-35	1450	3	10700	166	73	1.1
5.6-4-40	1450	1	8270	248	75	1.1
5.6-4-40	1450	2	10600	219	75	1.1
5.6-4-40	1450	3	12000	183	74	1.1
5.6-4-45	1450	1	9430	254	76	1.5
5.6-4-45	1450	2	12000	226	75	1.5
5.6-4-45	1450	3	13100	200	75	1.5
5.6-6-25	960	1	3200	85	62	63
5.6-6-25	960	2	4420	66	60	0.18
5.6-6-25	960	3	5030	50	59	157
5.6-6-30	960	1	3710	94	64	64
5.6-6-30	960	2	5600	69	62	0.18
5.6-6-30	960	3	6040	59	62	157
5.6-6-35	960	1	4740	102	65	102
5.6-6-35	960	2	6310	86	64	0.25
5.6-6-35	960	3	7230	68	64	157
5.6-6-40	960	1	5570	108	67	164
5.6-6-40	960	2	7050	95	66	0.37
5.6-6-40	960	3	8020	79	65	164
5.6-6-45	960	1	6240	111	67	164
5.6-6-45	960	2	8000	98	66	0.37
5.6-6-45	960	3	8840	85	66	164
6.3-4-25	1450	1	4930	234	75	75
6.3-4-25	1450	2	8770	169	71	0.75
6.3-4-25	1450	3	10300	127	71	183
6.3-4-30	1450	1	6340	242	75	186
6.3-4-30	1450	2	10000	204	74	1.1
6.3-4-30	1450	3	13000	154	73	186
6.3-4-35	1450	1	9500	264	77	186
6.3-4-35	1450	2	13200	231	76	1.5
6.3-4-35	1450	3	15600	179	76	74
6.3-4-40	1450	1	11800	285	78	183
6.3-4-40	1450	2	14500	258	77	1.5
6.3-4-40	1450	3	17700	203	77	77
6.3-4-45	1450	1	13400	288	79	189
6.3-4-45	1450	2	18200	270	78	2.2
6.3-4-45	1450	3	19200	221	78	80
6.3-6-25	960	1	3170	101	68	70
6.3-6-25	960	2	5720	73	62	0.18
6.3-6-25	960	3	6770	55	62	176
6.3-6-30	960	1	4500	105	67	73
6.3-6-30	960	2	6640	96	65	0.37
6.3-6-30	960	3	8560	65	64	183
6.3-6-35	960	1	5720	113	68	73
6.3-6-35	960	2	8400	102	67	0.37
6.3-6-35	960	3	10000	81	66	183
6.3-6-40	960	1	7700	122	69	73
6.3-6-40	960	2	9470	111	68	0.55
6.3-6-40	960	3	11000	95	68	183
6.3-6-45	960	1	9020	124	69	73
6.3-6-45	960	2	10500	117	69	0.55
6.3-6-45	960	3	12100	99.8	69	183

Remark: 1. The technical data is tested at 380V~ / 50Hz / 3Ph.
2. Customized rated voltage and frequency are available.

备注: 1. 以上所有参数均由380V~ / 50Hz / 3Ph进行测试。
2. 可根据客户的额定电压和频率来订做合适的产品。

Roof Axial Fan 屋顶轴流风机

Electrical Ratings 技术参数

型号 Model No.	转速 RPM (R.P.M.)	设计序号 Design Serial No.	风量 Volume (m ³ /h)	风压 Volume Pressure (Pa)	功率 Noise Power (W)	净重 Net Weight (kg)
8.0-6-40	960	1	14900	220	77	320
8.0-6-40	960	2	20500	184	76	1.5
8.0-6-40	960	3	24300	128	74	320
8.0-6-45	960	1	17400	229	78	327
8.0-6-45	960	2	23800	200	77	2.2
8.0-6-45	960	3	26300	173	77	327
9.0-4-25	1450	1	17000	368	82	308
9.0-4-25	1450	2	20000	293	81	3
9.0-4-25	1450	3	22800	213	81	3
9.0-4-30	1450	1	23000	441	85	347
9.0-4-30	1450	2	26200	372	84	4
9.0-4-30	1450	3	31200	239	82	374
9.0-4-35	1450	1	28600	428	86	5.5
9.0-4-35	1450	2	33500	428	86	5.5
9.0-4-35	1450	3	37800	327	85	374
9.0-4-40	1450	1	34200	550	89	7.5
9.0-4-40	1450	2	38800	490	88	7.5
9.0-4-40	1450	3	43500	413	87	374
9.0-4-45	1450	1	39000	602	91	416
9.0-4-45	1450	2	46200	532	90	11
9.0-4-45	1450	3	53400	420	89	416
9.0-6-25	960	1	10000	176	73	1.1
9.0-6-25	960	2	13600	123	71	1.1
9.0-6-25	960	3	15500	83.1	70	282
9.0-6-30	960	1	15000	194	75	290
9.0-6-30	960	2	18000	153	74	1.5
9.0-6-30	960	3	19600	125	73	302
9.0-6-35	960	1	18100	218	78	302
9.0-6-35	960	2	21900	191	76	2.2
9.0-6-35	960	3	25100	142	75	302
9.0-6-40	960	1	21200	248	80	302
9.0-6-40	960	2	26200	209	77	2.2
9.0-6-40	960	3	29600	171	77	302
9.0-6-45	960	1	25000	264	81	320
9.0-6-45	960	2	30000	238	80	3
9.0-6-45	960	3	33700	206	79	320
9.0-6-50	960	1	28700	274	82	320
9.0-6-50	960	2	35000	252	81	7.5
9.0-6-50	960	3	37800	231	80	320
10.0-4-25	1450	1	13800	486	86	4
10.0-4-25	1450	2	21600	341	83	4
10.0-4-25	1450	3	23900	297	82	288
10.0-4-30	1450	1	21100	509	87	319
10.0-4-30	1450	2	27700	453	86	5.5
10.0-4-30	1450	3	33900	336	85	319
10.0-4-35	1450	1	31500	531	88	319
10.0-4-35	1450	2	38100	476	88	7.5
10.0-4-35	1450	3	43400	398	87	319
10.0-4-40	1450	1	36300	564	91	365
10.0-4-40	1450	2	47000	538	90	11
10.0-4-40	1450	3	53700	461	89	378
10.0-4-45	1450	1	47000	653	92	15
10.0-4-45	1450	2	58500	595	92	15
10.0-4-45	1450	3	69100	456	90	378

Remark: 1. The technical data is tested at 380V~ / 50Hz / 3Ph.
2. Customized rated voltage and frequency are available.

备注: 1. 以上所有参数均由380V~ / 50Hz / 3Ph进行测试。
2. 可根据客户的额定电压和频率来订做合适的产品。

Electrical Ratings 技术参数

型号 Model No.	转速 RPM (R.P.M.)	设计序号 Design Serial No.	风量 Volume (m ³ /h)	风压 Volume Pressure (Pa)	功率 Noise Power (W)	净重 Net Weight (kg)
10.0-4-50	1450	1	51900	668	94	419
10.0-4-50	1450	2	60000	611	94	18.5
10.0-4-50	1450	3	70500	614	93	419
10.0-6-25	960	1	9100	208	76	264
10.0-6-25	960	2	13700	152	73	1.1
10.0-6-25	960	3	16700	111	71	264
10.0-6-30	960	1	12700	229	78	272
10.0-6-30	960	2	18100	195	76	1.5
10.0-6-30	960	3	24400	110	75	272
10.0-6-35	960	1	19400	227	78	284
10.0-6-35	960	2	25100	203	77	2.2
10.0-6-35	960	3	30700	132	76	284
10.0-6-40	960	1	22300	249	81	302
10.0-6-40	960	2	32400	222	80	3
10.0-6-40	960	3	37300	173	78	302
10.0-6-45	960	1	30900	280	82	312
10.0-6-45	960	2	38700	254	81	4
10.0-6-45	960	3	41900	232	81	312
10.0-6-50	960	1	33800	286	84	319
10.0-6-50	960	2	40600	288	83	5.5
10.0-6-50	960	3	46600	261	83	319
11.2-6-25	960	1	11400	279	80	372
11.2-6-25	960	2	16300	211	77	2.2
11.2-6-25	960	3	20000	162	76	372
11.2-6-30	960	1	21500	292	82	400
11.2-6-30	960	2	28400	239	80	4
11.2-6-30	960	3	31400	173	79	400
11.2-6-35	960	1	28200	332	84	407
11.2-6-35	960	2	34100	286	83	5.5
11.2-6-35	960	3	41600	189	81	407
11.2-6-40	960	1	31700	358	86	448
11.2-6-40	960	2	45300	296	84	7.5
11.2-6-40	960	3	53400	219	84	448
11.2-6-45	960	1	40000	365	87	448
11.2-6-45	960	2	53200	332	86	7.5
11.2-6-45	960	3	61800	256	85	448
11.2-6-50	960	1	43400	375	89	456
11.2-6-50	960	2	59200	360	88	11
11.2-6-50	960	3	70400	324	87	456
12.5-6-40	960	1	41300	346	86	7.5
12.5-6-40	960	2	69000	204	83	519
12.5-6-40	960	3	81000	375	87	519
12.5-6-45	960	1	52800	375	87	519
12.5-6-45	960	2	81100	241	86	11
12.5-6-45	960	3	91800	282	87	15
12.5-8-40	720	1	37800	193	77	4
12.5-8-40	720	2	51300	129	70	4
12.5-8-45	720	1	45100	212	81	5.5
12.5-8-45	720	2	68800	154	79	5.5
12.5-8-50	720	1	50600	226	82	5.5
12.5-8-50	720	2	65800	118	80	5.5

Remark: 1. The technical data is tested at 380V~ / 50Hz / 3Ph.
2. Customized rated voltage and frequency are available.

备注: 1. 以上所有参数均由380V~ / 50Hz / 3Ph进行测试。
2. 可根据客户的额定电压和频率来订做合适的产品。